



RHINO Stainless Steel Coupler

The SS series of mechanical coupler is designed to join ASTM A955 rebar, where one bar is free to rotate. The coupler has machined taper threads at both ends connecting two ends of rebar to make a mechanical splice. This simplifies rebar splicing in areas where steel congestion makes it difficult for long lap splices. The taper thread design allows for quick alignment and engagement of the bar within the coupler. Stainless steel couplers are specified whenever corrosive environmental conditions combine with the need for high load-bearing strength. RHINO Stainless Steel couplers are commonly used when the construction materials may come into contact with de-icing salts, salt water or marine environments.



Features and Benefits

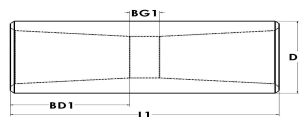
- Can be used in a wide variety of global rebar grades and deformation patterns
- Stainless Steel Material:2205
- Meets or exceeds international building codes including ACI 318 Type 1 & Type 2, BS8110, DIN1045, Hong Kong Building Department Type 2 and many others.
- Taper design allows for quick alignment and eliminates cross threading
- Installs quickly with taper thread
- Slim design frees up space in congested area
- **MADE IN THE USA** - Steel & Couplers



Typical Applications

- Column Bar Splicing
- Bridges & Bridge Decks
- Marine Environments

Part Number	US Rebar Size	Metric Rebar Size	Canada Rebar Size	L1 (in)	L1 (mm)	D1 (in)	D1 (mm)	BD1 (in)	BD1 (mm)	BG1 (in)	BG1 (mm)	Weight (lbs)	Weight (kg)
SS13	#4	12mm	-	2.19	55	1.0	25	.87	22	.43	11	.17	.08
SS16	#5	16mm	15M	2.50	63	1.0	25	1.10	28	.31	8	.2	.10
SS19	#6	20mm	20M	2.80	71	1.25	32	1.22	31	.31	8	.44	.20
SS22	#7	22mm	-	3.19	81	1.25	32	1.28	33	.31	8	.88	.40
SS25	#8	25mm	25M	3.39	86	1.50	38	1.51	38	.38	10	1.20	.54
SS28	#9	28mm	30M	3.70	94	1.50	38	1.70	43	.31	8	1.40	.63
SS32	#10	32mm	-	4.25	108	1.75	45	1.88	48	.50	13	1.80	.82
SS36	#11	36mm	35M	4.57	116	2.00	51	2.18	55	.21	6	2.20	1.0



DIMENSIONS ARE FOR REFERENCE ONLY.